

# Prevention of erosion by the region`s forests near school

A forest is a place populated by trees. There are forests in virtually every region of the planet. Human activity, however, may constitute a risk for its conservation.



## The local forest

**Amarante Forest Park**  
It overlooks the Tâmega and occupies more than 5 hectares of land

Objective: To forest the Marão mountain range

Most important species: Ginkgo and Eucalyptus

Bibliography:

<https://pt.wikipedia.org/wiki/Floresta>

[https://pt.wikipedia.org/wiki/Parque\\_Florestal\\_de\\_Amarante](https://pt.wikipedia.org/wiki/Parque_Florestal_de_Amarante)



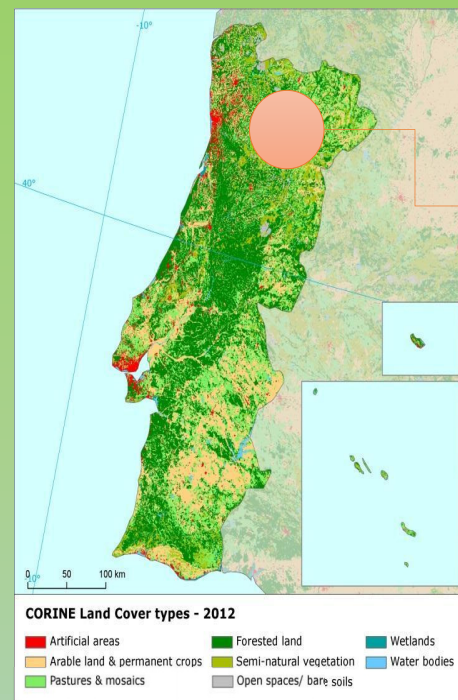
## Forest erosion risks

- Forest fires
- Slope of affected land
- Geological and pedological nature of the land
- Intensity of rains following fires

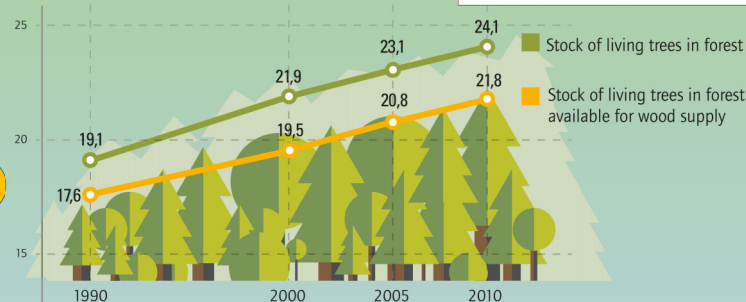


## Preventive methods

- Good forest practices
- Creation of barriers with vegetation
- Creation of dams
- Creation of drainage ditches



Forest in EU28 [billion of m<sup>3</sup>]



*“The clearest way into the universe is through a forest wilderness”*

John Muir

Marta Silva; Sofia Pinto; Tânia Guimarães  
Externato de Vila Meã

